

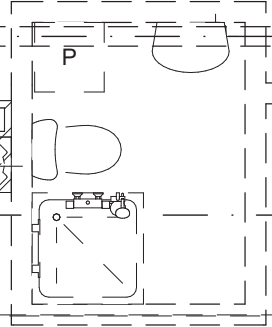
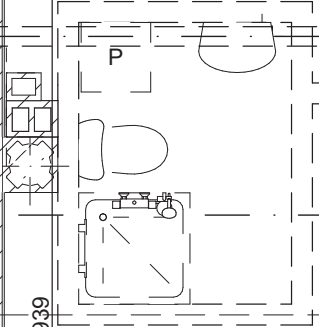
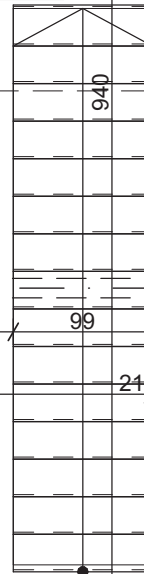
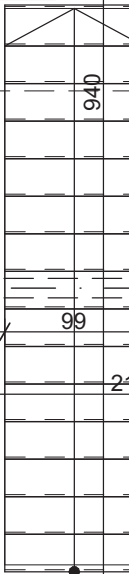
**M-10 - strych**  
25,17 m<sup>2</sup>

2.1.  
Klatka schodowa  
2,65 m<sup>2</sup>

2.1.  
Klatka schodowa  
2,65 m<sup>2</sup>

600  
556  
597  
21;21

556  
600  
21;21



59

43

43

939

939

99

21

101

378

576

99

21

101

100

43

43